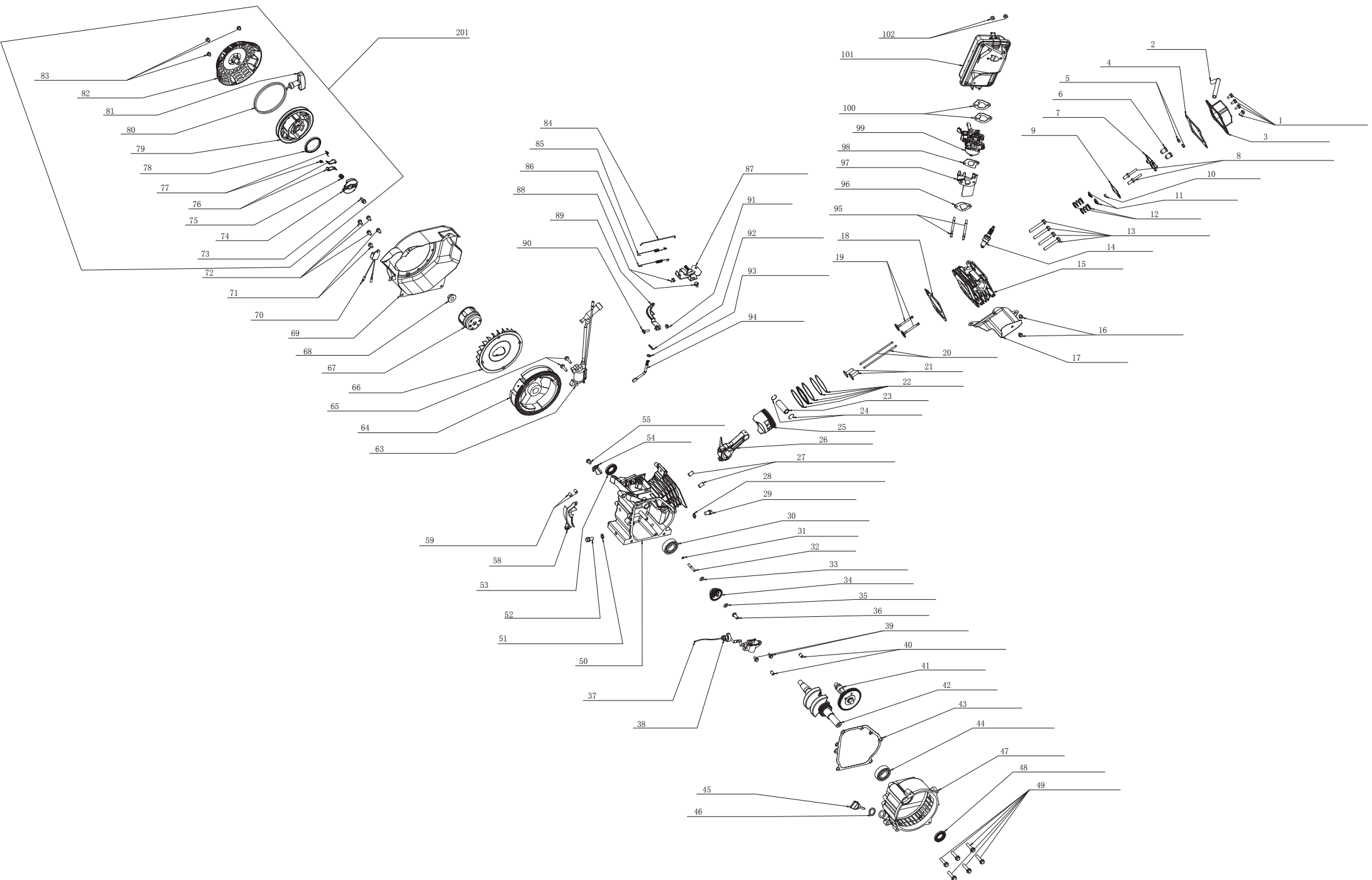


# PG2200, PG2800

| NO. | DESCRIPTION               | NO. | DESCRIPTION       |
|-----|---------------------------|-----|-------------------|
| 1   | FUEL TANK                 | 31  | CONNECTION BLOCK  |
| 2   | FUEL TANK COVER           | 32  | HEX. FLANGE BOLT  |
| 3   | FILTER FILTER             | 33  | AVR               |
| 4   | FUEL GAUGE (INDICATOR)    | 34  | HEX. FLANGE BOLT  |
| 5   | SCREW                     | 35  | FLAT WAHSER       |
| 6   | FUEL TANK SWITCH ASSEMBLY | 36  | HEX. FLANGE BOLT  |
| 7   | FUEL PIPE                 | 37  | BACK COVER        |
| 8   | FUEL PIPE CLAMP           | 38  | HEX. FLANGE BOLT  |
| 9   | FUEL TANK CUSHION         | 39  | FLAT WAHSER       |
| 10  | BUSH                      | 40  | FLAME STAND       |
| 11  | FLAT WASHER               | 41  | PANEL             |
| 12  | HEX. FLANGE BOLT          | 42  | PANEL REAR COVER  |
| 13  | FLAME                     | 43  | POWER INDICATOR   |
| 14  | ENGINE                    | 44  | LONG BOLT         |
| 15  | AIR FILTER BRACKET        | 45  | SWITCH            |
| 16  | HEX. FLANGE BOLT          | 46  | DC PROTECTOR      |
| 17  | MUFFLER SEAL              | 47  | TERMINAL          |
| 18  | MUFFLER ASSEMBLY          | 48  | VOLTMETER         |
| 19  | SPRING WASHER             | 49  | BREAKER           |
| 20  | HEX. FLANGE BOLT          | 50  | EURO STYLE SOCKET |
| 21  | MUFFLER SUPPORT BRACKET   | 51  | CORD SHEATH       |
| 22  | HEX. FLANGE BOLT          | 52  | NUT               |
| 23  | HEX. FLANGE BOLT          | 53  | SMALL CUSHION PAD |
| 24  | NUT                       | 54  | FLAT WAHSER       |
| 25  | ROTOR                     | 55  | SPRING WASHER     |
| 26  | STATOR                    | 56  | BIG CUSHION PAD   |
| 27  | MOTOR REAR COVER          | 57  | BOARD             |
| 28  | RECTIFIER                 | 58  | HEX. FLANGE BOLT  |
| 29  | HEX. FLANGE BOLT          | 59  | MUFFLER GUARD     |
| 30  | CARBON BRUSH ASSEMBLY     |     |                   |



## ENGINE FOR PG2200, PG2800

| NO. | DESCRIPTION                       | NO. | DESCRIPTION               |
|-----|-----------------------------------|-----|---------------------------|
| 1   | HEX. FLANGE BOLT                  | 53  | OIL SEAL                  |
| 2   | RIGHT-ANGLE WASTE PIPE            | 54  | PRESSURE BOARD            |
| 3   | CYLINDER HEAD COMP                | 55  | HEX. FLANGE BOLT          |
| 4   | CYLINDER HEAD SEAL                | 58  | FLY WHEEL GUARD           |
| 5   | VALVE CLEARANCE ADJUSTING NUT     | 59  | MOTOR ASSY POSITION PIN   |
| 6   | VALVE ARM NUT                     | 63  | IGNITION COIL ASSY        |
| 7   | VALVE ARM                         | 64  | FLY WHEEL WITH GEAR       |
| 8   | BOLT                              | 65  | HEX. FLANGE BOLT          |
| 9   | LEVER BRACKET                     | 66  | FAN                       |
| 10  | VALVE HEAD CAP                    | 67  | START COVER               |
| 11  | VALVE SPRING BASE                 | 68  | NUT                       |
| 12  | VALVE SPRING                      | 69  | FAN COVER                 |
| 13  | BOLT                              | 70  | ONE-WAY CONDUCTOR ASSY    |
| 14  | SPARK PLUG                        | 71  | HEX. FLANGE BOLT          |
| 15  | CYLINDER HEAD                     | 72  | HEX. FLANGE BOLT          |
| 16  | HEX. FLANGE BOLT                  | 73  | PRESSURE BOARD SCREW      |
| 17  | DOWN WINDING GUARD                | 74  | PRESSURE BOARD            |
| 18  | CYLINDER HEAD SEAL GASKET         | 75  | PRESSURE BOARD SPRING     |
| 19  | INTAKE AND EXHAUST VALVE          | 76  | RATCHET                   |
| 20  | LEVER ASSEMBLY                    | 77  | RATCHET SPRING            |
| 21  | LITER                             | 78  | SPRING                    |
| 22  | PISTON RING ASSY                  | 79  | RECOIL STARTER REEL       |
| 23  | PISTON PIN                        | 80  | PULLING CORD              |
| 24  | PISTON PIN CIRCLIP                | 81  | HANDLE                    |
| 25  | PISTON                            | 82  | REEL COVER                |
| 26  | CONNECTION ROD ASSY               | 83  | HEX. FLANGE BOLT          |
| 27  | VALVE HEAD POSITION PIN           | 84  | GOVERNOR ROD              |
| 28  | OIL DRAIN BOLT WASHER             | 85  | TRIMMING SPEED SPRING     |
| 29  | OIL DRAIN BOLT                    | 86  | RESET SPRING              |
| 30  | DEEP GROOVE BALLING BEARING 6205  | 87  | GOVERNOR BASE ASSY        |
| 31  | CIRCLIP FOR SPEED ADJUSTING SHAFT | 88  | HEX. FLANGE BOLT          |
| 32  | SPEED ADJUSTING SHAFT             | 89  | GOVERNOR ARM              |
| 33  | WASHER                            | 90  | T-SHAPED BOLT             |
| 34  | SPEED GEAR ASSY                   | 91  | NUT                       |
| 35  | WASHER                            | 92  | GOVERNOR ROD PIN CLAMP    |
| 36  | SPEED ADJUSTING SHAFT BUSH        | 93  | WASHER                    |
| 37  | OIL SENSOR ASSY                   | 94  | GOVERNOR ROD CLAMP        |
| 38  | NUT                               | 95  | STUD BOLT                 |
| 39  | HEX. FLANGE BOLT                  | 96  | INTAKE WASHER             |
| 40  | CRANKCASE POSITION PIN            | 97  | CARBURETOR HEAT INSULATOR |
| 41  | CAMSHAFT ASSY                     | 98  | (OUT)CARBURETOR WASHER    |
| 42  | CRANK ASSY                        | 99  | CARBURETOR ASSEMBLY       |
| 43  | CRANKCASE PAPER WASHER            | 100 | (IN)CARBURETOR WASHER     |
| 44  | DEEP GROOVE BALLING BEARING 6205  | 101 | AIR FILTER ASSEMBLY       |
| 45  | OIL LEVEL CAP ASSEMBLY            | 102 | NUT                       |
| 46  | OIL LEVEL SEAL                    | 201 | RECOIL STARTER            |
| 47  | CRANKCASE HIGH COVER              |     |                           |
| 48  | OIL SEAL                          |     |                           |
| 49  | HEX. FLANGE BOLT                  |     |                           |
| 50  | CRANKCASE                         |     |                           |
| 51  | OIL DRAIN BOLT WASHER             |     |                           |
| 52  | OIL DRAIN BOLT                    |     |                           |